

Gloucester’s Climate Action and Resilience Goals and Strategies

Climate actions intersect with many facets of life, from the built environment, infrastructure that keeps the City running, to public health, the economy, and the natural world.

As such, the CARP’s goals and strategies are organized into seven planning areas:



Buildings



Infrastructure



Energy



Natural Resources



Solid Waste Resources



Mobility



Social Resilience

Goal and Action Setting:

Based on Gloucester’s climate planning efforts to date, as well as input from municipal staff and community members, the CARP goals are designed to be bold, but also realistic, to guide the City’s mitigation and resilience efforts going forward. These goals also align with current state goals and targets to achieve net zero and enhance community resilience.

Implementation Strategy Development:

The City strived to develop CARP strategies that encompass many interconnecting benefits: environmental, social, and economic. It is important to make sure the prioritized climate actions have the maximum co-benefits realized – not only to address climate change issues but also protect and improve Gloucester’s natural resources and enhance the community’s public health, well-being, and quality of life.

Spheres of Influence

To demonstrate how Gloucester plans on achieving its climate goals, this Plan also identifies the realm of influence of each strategy. This allowed each goal to define more clearly what the City's role looks like moving actions forward. All CARP strategies are organized into the following "Sphere of Influence" categories:

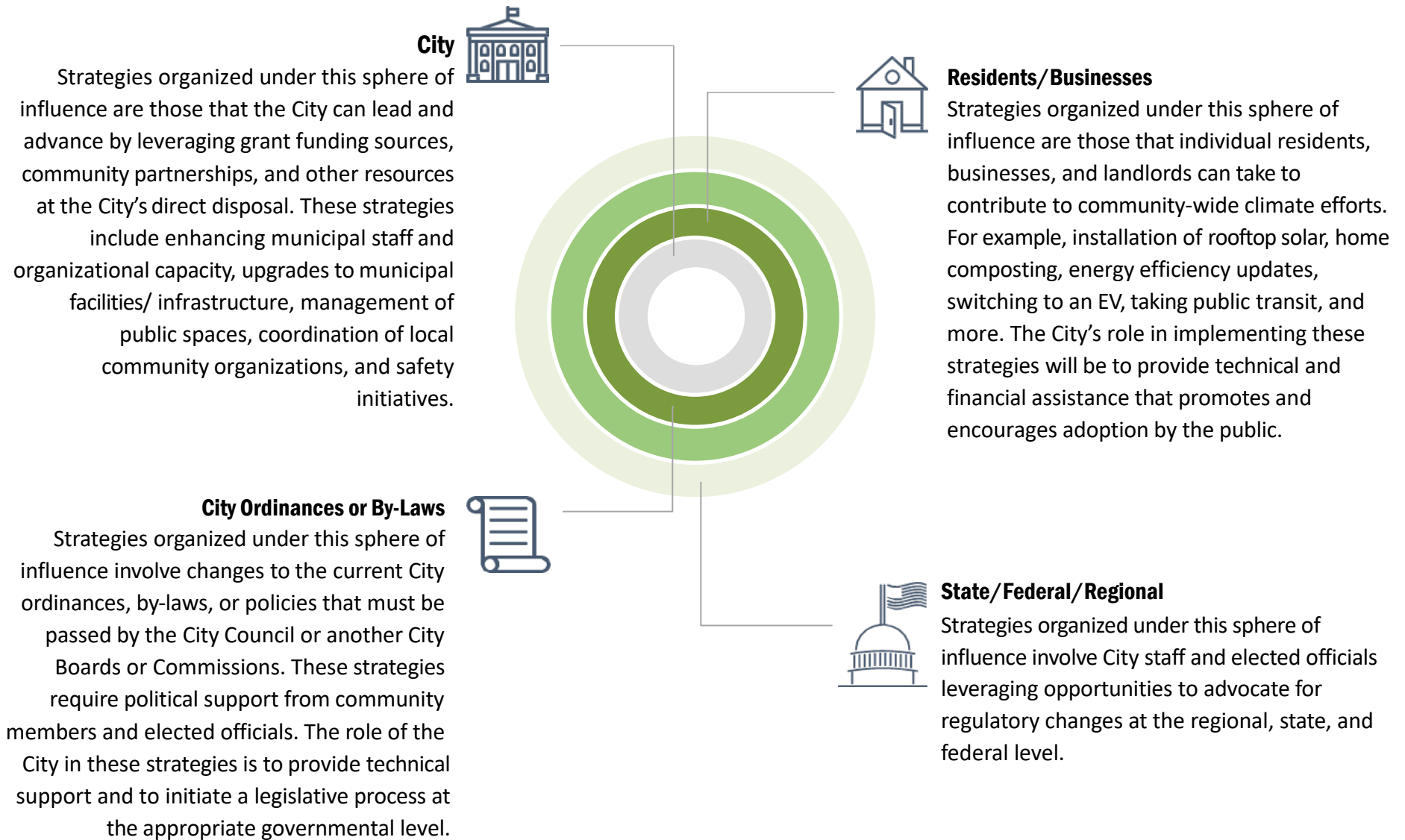


Figure 14: Sphere of Influence

Implementation Blueprints for Priority Strategies

The following section presents implementation details for select priority strategies. These strategies were considered as priorities based on input and feedback from the CEC and from community input in CARP workshops. These implementation details will help City staff put the plan into action.

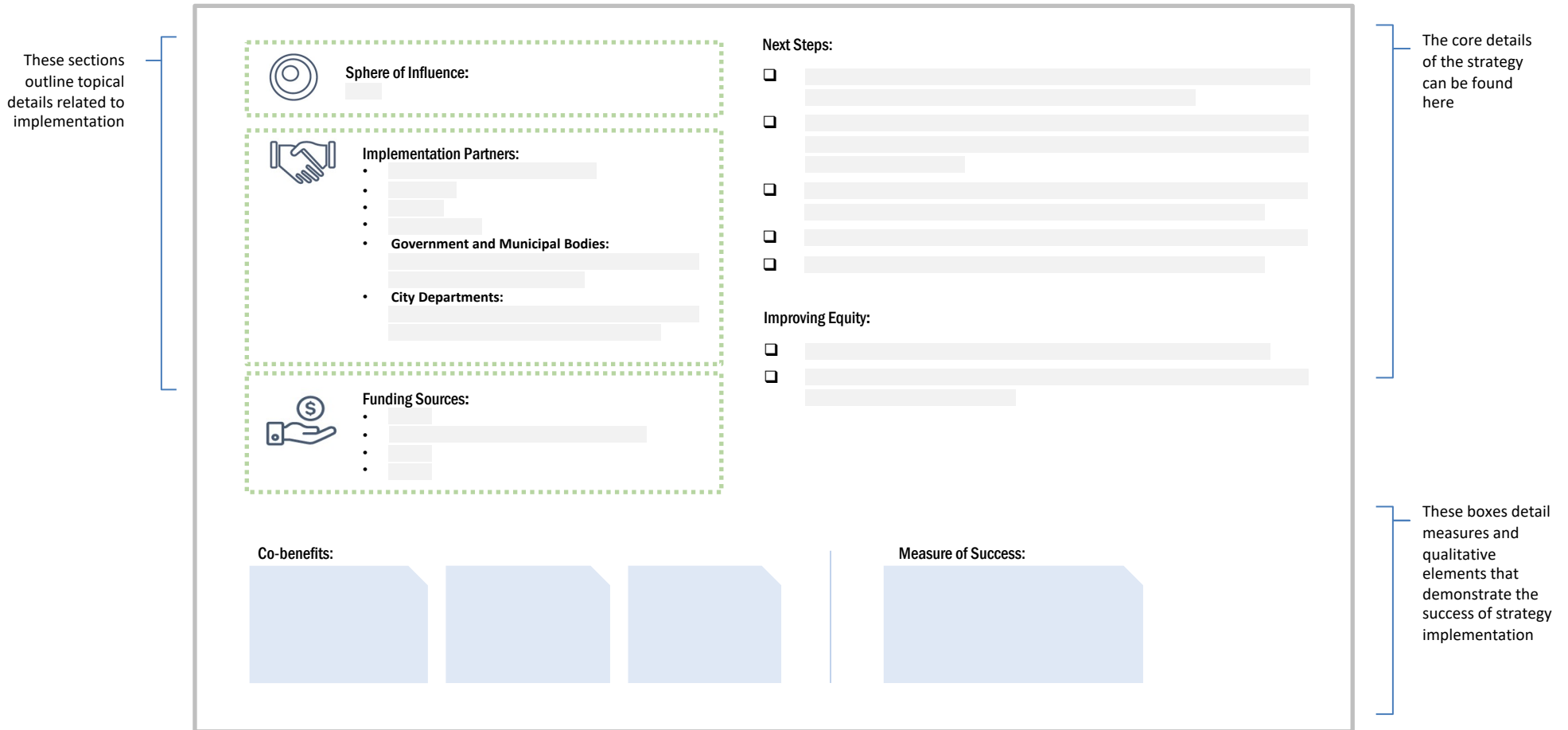


Figure 15: How to read a Strategy Implementation Blueprint